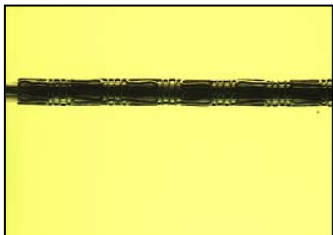


What can VisionGauge® products do for you? Read examples of applications that VisionGauge® products have successfully solved!

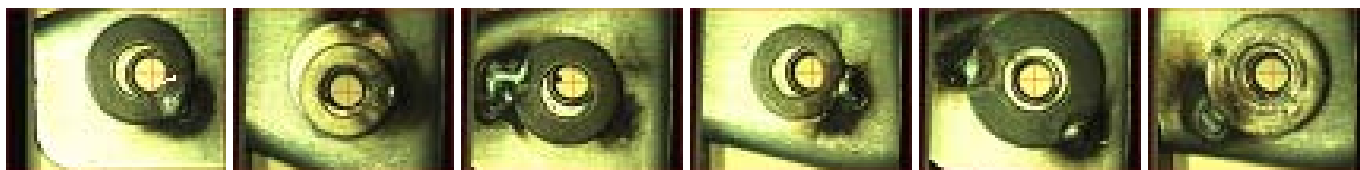
Automatic High Accuracy Measurement and Inspection of Medical Devices



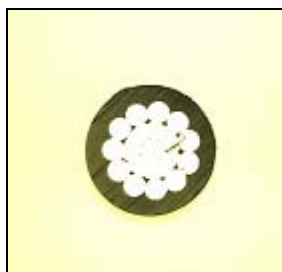
VisionGauge® OnLine is used for automatic high accuracy measurement and automatic final inspection of different types of medical devices such as stents, prosthetic valves, angiography catheters, guide wires, etc... VisionGauge® OnLine is capable of carrying out many different types of dimensional measurements on these devices including ID & OD measurements. And, of course, VisionGauge® OnLine is also capable of computing "running" statistics, creating graphs, plots & charts, exporting data to other applications, etc...

Automatic Feature Detection & High Accuracy Location

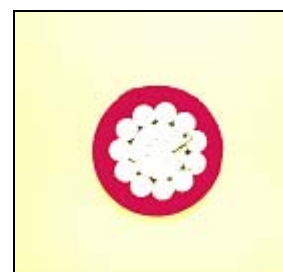
VisionGauge® OnLine's powerful Pattern Matching tools can be used to automatically detect and very accurately locate arbitrary features. In the automotive industry, for example, VisionGauge® OnLine can be used to locate different types of registration holes, even in the presence of: partial occlusion (i.e. when they are partially hidden), varying contrast (because of variations in background material), variable illumination, etc... VisionGauge® OnLine's Pattern Matching tools are easy to setup, they are extremely fast and they produce very accurate results.



Automatic High-Accuracy ID / OD Measurements



VisionGauge® OnLine can be used to automatically carry out ID and OD (i.e. inside diameter and outside diameter) measurements of parts with outside walls. With VisionGauge® OnLine, these measurements are very fast and results are extremely accurate.



*To find out how
we can solve
your specific
application
needs, please
contact us.*



For more information please visit
our website
www.visionxinc.com
Have questions and/or comments?
info@visionxinc.com
VISIONx Inc.
15A Cartier
Pointe Claire QC H9S 4R6
514-694-9290 (phone)
514-694-9488 (fax)